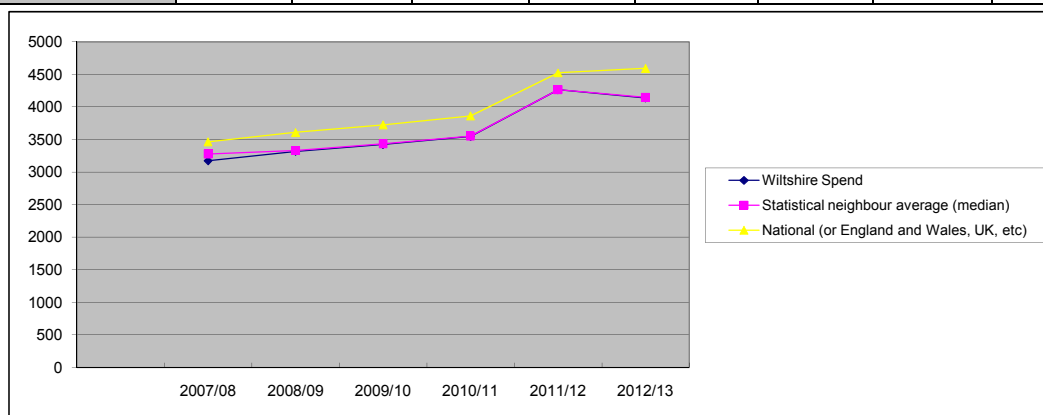


## Wiltshire Section 251 Benchmarking 2012-13 - NET Expenditure

<b>Section 251 Line</b>	<b>Individual Schools Budget</b>
<b>Definition</b>	<i>Line 1.0.1 Individual Schools Budget per pupil</i>

Table of data							
Financial year	2007/08	2008/09	2009/10	2010/11	2011/12	2012/13	
<b>Wiltshire Spend</b>	3176	3320	3426	3549	4268	4139	
<b>Statistical neighbour average (median)</b>	3278	3334	3435	3555	4268	4148	
<b>National (or England and Wales, UK, etc)</b>	3465	3610	3726	3864	4526	4594	



### Describe the data to pick out features of performance and trends compared to other Local Authorities and National performance

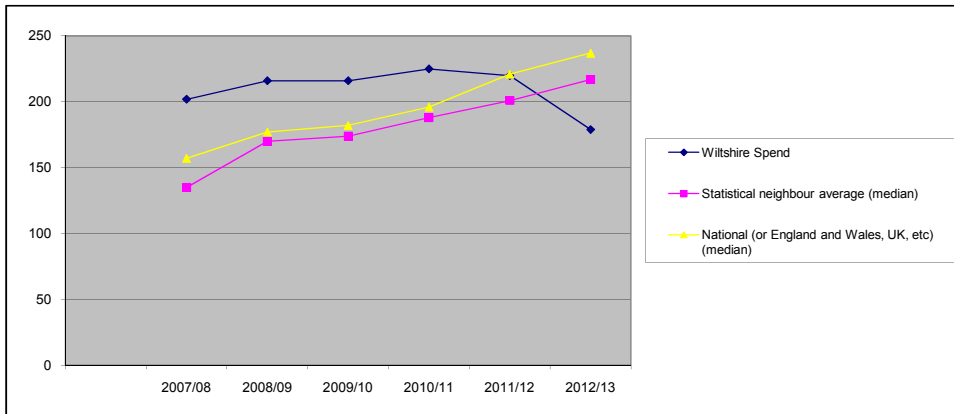
<b>2010/11</b>	<p>Funding Delegated to schools in Wiltshire is lower than the national average. This would be expected as funding received by the county is lower than more urban authorities, for example and lower than its statistical neighbours. Comparison with statistical neighbours shows Wiltshire is now in line with the average for similar authorities in terms of the amount delegated to schools. increased delegation of SEN funding to Primary Schools will have contributed to this, the position may also be affected by the way in which mainstreamed grants were delegated (although this should be reflected in all authorities and accounts for the overall increase in total in each case) and the fact that Wiltshire did not apply an negative inflation adjustment to schools budgets in 2011/12 when a number of other LAs did.</p>
----------------	---

<b>Data Source:</b>	
Section 52/251 Benchmarking - line 1.0.1. includes school budget share comprising DSG and LSC allocations	
<b>Date of completion</b>	<b>18/09/2012</b>
<b>Completed by</b>	<b>Liz Williams</b>

## Wiltshire Section 251 Benchmarking 2012-13 - NET Expenditure

<b>Section 251 Line</b>	Lines 1.2.1 to 1.2.8 - Schools Budget SEN
<b>Definition</b>	Schools Budget SEN (not including PRUs, behaviour support, education out of school) £ / pupil (sum of lines 1.2.1 to 1.2.8)

Table of data							
Financial year	2007/08	2008/09	2009/10	2010/11	2011/12	2012/13	
<b>Wiltshire Spend</b>	202	216	216	225	220	179	
<b>Statistical neighbour average (median)</b>	135	170	174	188	201	217	
<b>National (or England and Wales, UK, etc) (median)</b>	157	177	182	196	221	237	



**Describe the data to pick out features of performance and trends compared to other Local Authorities and National performance**

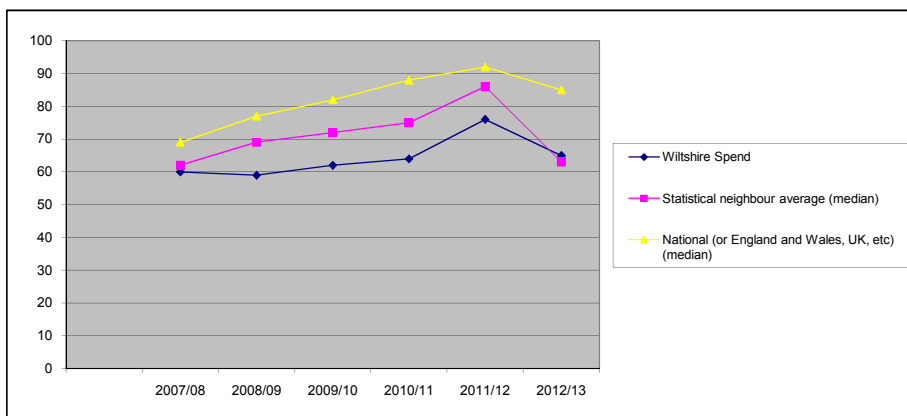
<b>2010/11</b>	Expenditure on SEN retained centrally within DSG is now in line with the national average. In previous years Wiltshire has benchmarked as retaining more funding centrally than the average for statistical neighbours and than the national average. The reduction in expenditure on external placements and the increased delegation of SEN funding to mainstream primary schools, in addition to investment in Wiltshire's special schools have brought Wiltshire in to line with other authorities.
----------------	---

<b>Date of completion</b>	<b>18/09/2012</b>
<b>Completed by</b>	<b>Liz Williams</b>

## Wiltshire Section 251 Benchmarking 2012-13 - NET Expenditure

<b>Section 251 Line</b>	Lines 1.3.1 to 1.3.3 Behaviour Support
<b>Definition</b>	PRUs/ Behaviour Support/ Education Otherwise £ / pupil (Sum of 1.3.1 to 1.3.3)

Table of data							
Financial year	2007/08	2008/09	2009/10	2010/11	2011/12	2012/13	
<b>Wiltshire Spend</b>	60	59	62	64	76	65	
<b>Statistical neighbour average (median)</b>	62	69	72	75	86	63	
<b>National (or England and Wales, UK, etc) (median)</b>	69	77	82	88	92	85	



**Describe the data to pick out features of performance and trends compared to other Local Authorities and National performance**

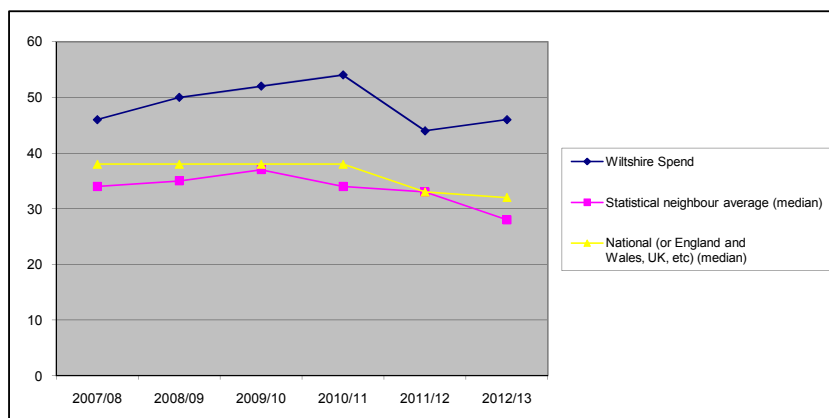
<b>2010/11</b>	Wiltshire spend is lower than statistical neighbours as in previous years.
----------------	--

<b>Date of completion</b>	<b>18/09/2012</b>
<b>Completed by</b>	<b>Liz Williams</b>

## Wiltshire Section 251 Benchmarking 2012-13 - NET Expenditure

<b>Section 251 Line</b>	<b>Line 2.0.6 SEN - non Schools Budget</b>
<b>Definition</b>	<i>SEN Expenditure by the LA - includes Psychology Service, SEN Administration, Assessment and Co-ordination, Therapies (Speech &amp; Language), Parent Partnership, Monitoring of SEN Provison</i>

Table of data							
Financial year	2007/08	2008/09	2009/10	2010/11	2011/12	2012/13	
<b>Wiltshire Spend</b>	46	50	52	54	44	46	
<b>Statistical neighbour</b>	34	35	37	34	33	28	
<b>National (or England and</b>	38	38	38	38	33	32	



**Describe the data to pick out features of performance and trends compared to other Local Authorities and National performance**

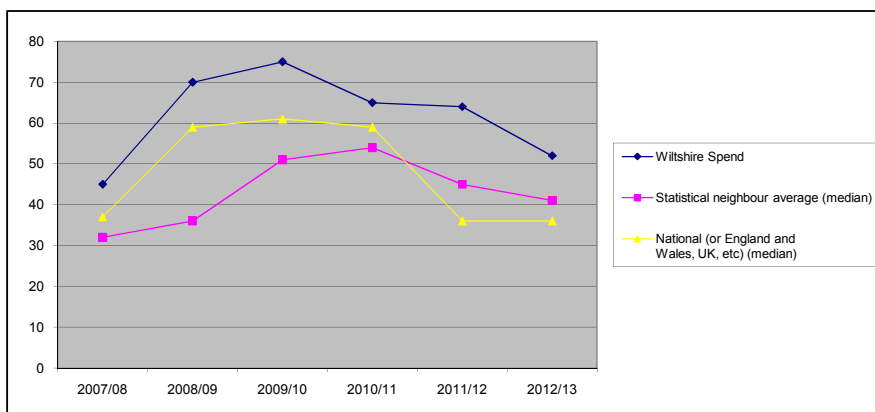
<b>2010/11</b>	Wiltshire spends above the national average and the average for statistical neighbours on SEN however spend in 2011/12 has reduced and is closer to the average. Savings have been made through the Management review and restructure of DCE and not in front line services.
----------------	--

<b>Date of completion</b>	<b>18/09/2012</b>
<b>Completed by</b>	<b>Liz Williams</b>

## Wiltshire Section 251 Benchmarking 2012-13 - NET Expenditure

<b>Section 251 Line</b>	Line 2.1.9 School Improvement
<b>Definition</b>	School Improvement Services

Table of data							
Financial year	2007/08	2008/09	2009/10	2010/11	2011/12	2012/13	
<b>Wiltshire Spend</b>	45	70	75	65	64	52	
<b>Statistical neighbour average (median)</b>	32	36	51	54	45	41	
<b>National (or England and Wales, UK, etc) (median)</b>	37	59	61	59	36	36	



**Describe the data to pick out features of performance and trends compared to other Local Authorities and National performance**

<b>2010/11</b>	<p>Pattern of spend shows a wide gap between spend in Wiltshire compared with statistical neighbours - gap narrowing in 2010/11. Spend in 2010/11 was more reflective of the national pattern but higher.</p> <p>The benchmarking data shows all authorities to have made reductions in their School Improvement expenditure, the reduction in Wiltshire is not as marked. this may reflect differing approaches in authorities towards reductions in LA spend following Government reductions and differing approaches to the new Academy regime.</p>
----------------	--

<b>Date of completion</b>	<b>18/09/2012</b>
<b>Completed by</b>	<b>Liz Williams</b>